

**Dairy Farmers of New Brunswick
Milk Matters: Production and Payment Summary Report for February 2022**

Quota Exchange for March, 2022

	Price in Dollars	# of Sellers	Kgs Offered By Sellers	Total Cum. kgs	Difference Between Sellers/Buyers	Total Cum. kgs	Kgs Wanted By Buyers	# of Buyers
QESP	\$24,000.00		.0	.0	678.6	678.6	678.6	
TOTALS		0	.0				678.6	28

QESP = Quota Exchange Selling Price

QESP = Le prix de vente de quota

.0 of 678.6 kgs wanted at or above the Quota Exchange Selling Price of \$24,000.00 were purchased.

.0 des 678.6 kilos demandé au prix de vente de \$24,000.00 ou au dessus ont été acheté. Il y avait un total de .0 kgs proposés à la vente et le total des offres pour l'achat de 678.6kg.

There was a total of .0 kgs offered for sale and total bids to purchase of 678.6 kgs.

Next Exchange closes at 4:00 p.m., Friday April 1, 2022

Results are available Wednesday April 6, 2022

Month	Mar	Feb	Jan	Dec	Nov	Oct	6 month avg.
Clearing Price	\$0	\$0	\$24,000	\$24,000	\$24,000	\$24,000	\$24,000
Kgs on Exchange	.0	.0	2.0	25.5	3.0	53.1	20.9
Kgs by Transfer	.0	.0	188.8	.0	12.4	.0	33.5

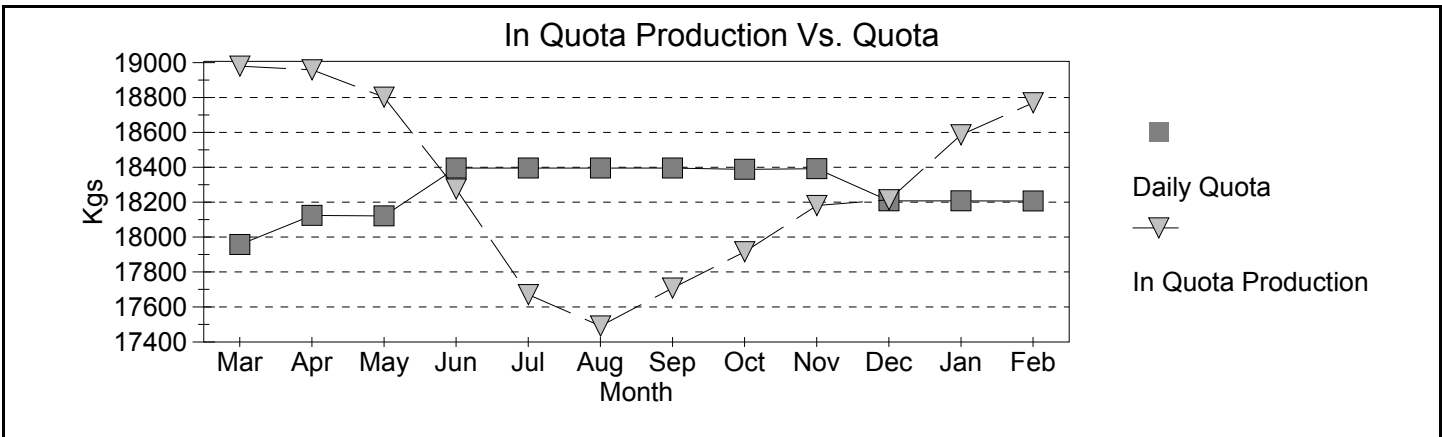
NB Domestic Milk Pool

Over Quota	BF Kg	BF \$/kg	BF \$	PT Kg	PT \$/kg	PT \$	OS Kg	OS \$/kg	OS \$
February 2022	674	-\$2.7327	(\$1,843)	489	-\$1.9107	(\$935)	864	-\$3.917	(\$339)
12 Months	6,251	-\$2.9445	(\$5,904)	4,863	-\$2.6545	(\$12,882)	8,549	-\$3.1346	(\$26,811)
SNF >2.3									
February 2022				47	\$0.0000	\$0	91	\$0.0000	\$0
12 Months				5,677	\$0.0000	\$0	10,475	\$0.0000	\$0
SNF 2.0<=2.3									
February 2022				25,153	\$3.9233	\$98,684	45,433	\$3.9233	\$178,247
12 Months				344,965	\$2.8093	\$969,116	626,146	\$2.8044	\$1,755,975
Domestic Market									
February 2022	524,722	\$13.3252	\$6,992,026	376,511	\$9.8622	\$3,713,222	667,712	\$9.9000	\$6,600,941
12 Months	6,669,170	\$11.1237	\$74,186,112	4,769,659	\$9.8123	\$46,801,467	8,514,550	\$9.9000	\$84,663,095

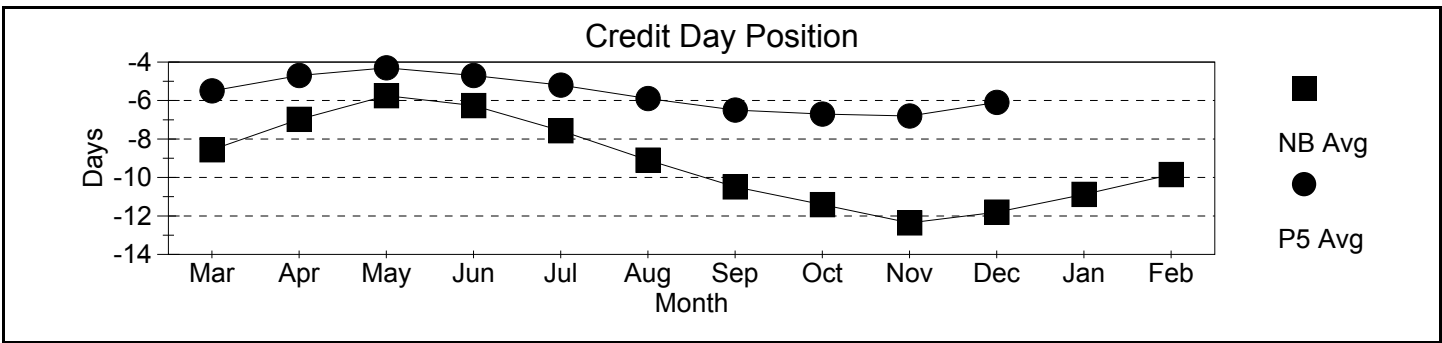
Production & Payment

Revenue	\$/HL	BF \$	PT \$	OS \$				Total Paid \$
February 2022	\$94.79	\$6,990,183	\$3,810,971	\$778,850				\$11,580,004
12 Months	\$83.59	\$74,180,208	\$47,767,401	\$9,417,919				\$131,365,528
Deductions	Transport	Promotion	Admin	Lab Fee	Research Levy	Total Ded Per HL		Total Deductions
	Per HL	Per Kg of Total Solids						
February 2022	\$3.05	\$.1139	\$.0570	\$.0100	\$.0016	\$5.50		\$672,758
12 Months	\$2.87	\$.1139	\$.0598	\$.0086	\$.0016	\$5.30		\$8,372,095
Quality	Somatic Cell Count	Standard Plate Count	Lab Past. Count					Rejected Loads
February 2022	159,104	10,909	116					0
12 Months	174,727	6,245	156					0
Production & Component Tests	Production Volume	Butter Fat	Protein	Lactose & O.S.	Total solids	SNF Ratio		
February 2022	12,234,376	4.2944	3.2875	5.8368	13.4187	2.1247		
12 Months	157,312,177	4.2434	3.2580	5.8226	13.3240	2.1399		

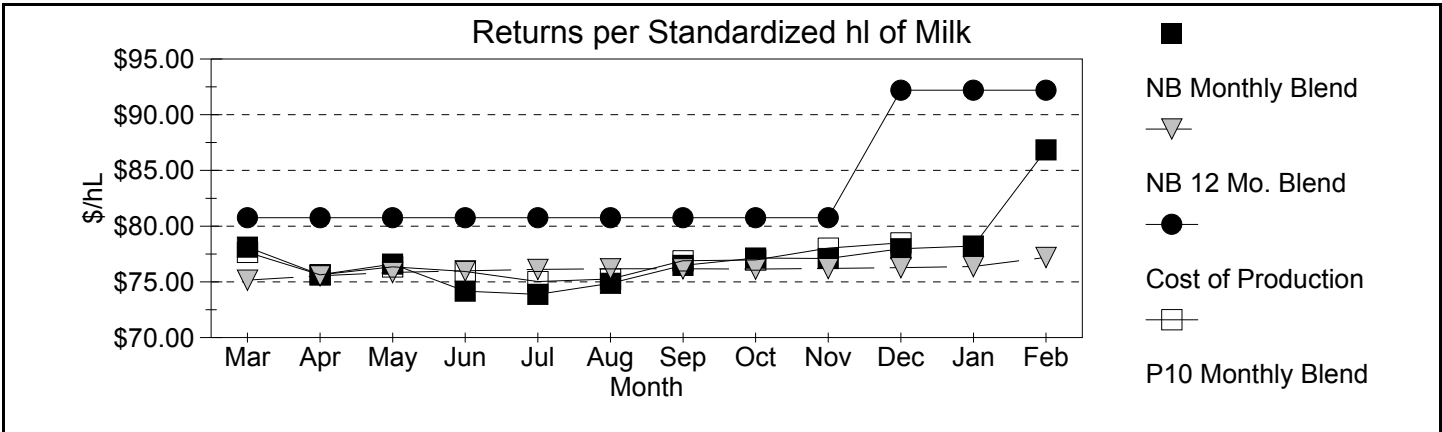
Milk Matters: Production and Payment Summary Report for February 2022



Credits



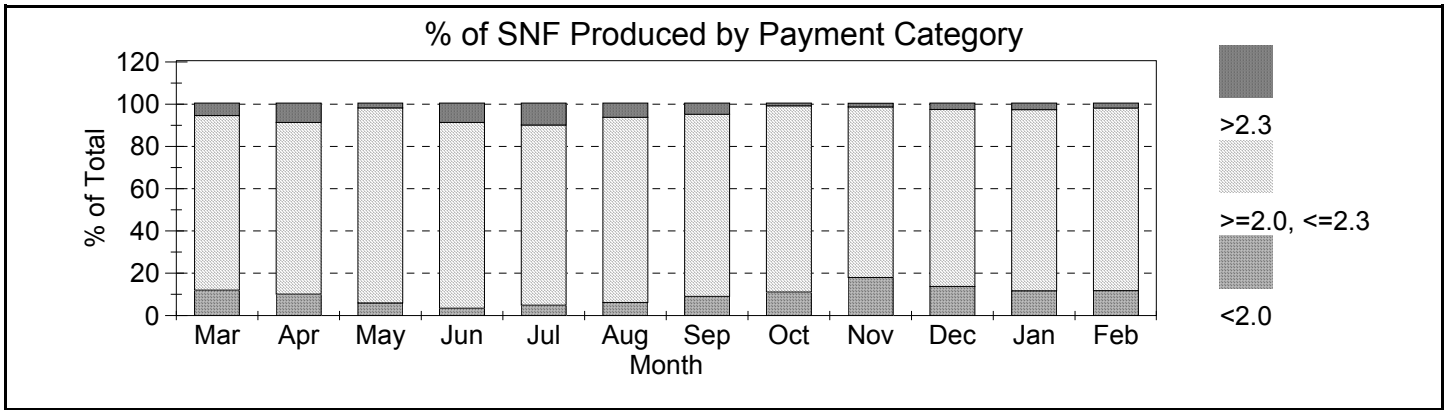
Month	Mar	Apr	May	Jun	Jul	Aug	Sep	Oct	Nov	Dec	Jan	Feb
Incentive Days Issued	0.00	0.00	0.00	1.00	1.00	1.00	2.00	1.00	2.00	0.00	0.02	0.06
Incentive Days Used	0.00	0.00	0.00	0.46	0.33	0.32	0.60	0.44	0.93	0.00	0.01	0.05
Days Over Quota	0.08	0.05	0.04	0.04	0.02	0.02	0.00	0.05	0.01	0.00	0.00	0.04
Days Lost	-0.11	-0.08	-0.04	-0.10	-0.20	-0.28	-0.29	-0.36	-0.39	-0.31	-0.14	-0.07
Days Exchanged	1.02	1.06	0.83	0.53	0.55	0.80	1.04	0.90	1.14	0.77	0.93	0.94
Credit Exch Clearing Price	\$10.00	\$10.00	\$10.00	\$4.55	\$3.01	\$5.01	\$4.75	\$3.99	\$4.00	\$3.75	\$5.43	\$7.78



Month	Mar	Apr	May	Jun	Jul	Aug	Sep	Oct	Nov	Dec	Jan	Feb
SNF 2.00-2.30 \$/kg	\$2.17	\$2.30	\$2.39	\$2.50	\$2.55	\$2.60	\$2.81	\$2.81	\$3.17	\$3.44	\$3.66	\$3.92

A standardized hl of milk contains 3.60 kg/hl BF, 3.23 kg/hl PT and 5.69 kg/hl LOS

SNF Policy



SNF/BF: Avg Ratios

Month	Mar	Apr	May	Jun	Jul	Aug	Sep	Oct	Nov	Dec	Jan	Feb
< 2	1.93	1.93	1.92	1.90	1.93	1.93	1.92	1.91	1.92	1.91	1.91	1.92
2 < > 2.3	2.13	2.14	2.16	2.18	2.18	2.17	2.17	2.14	2.14	2.14	2.14	2.15
> 2.3	2.35	2.33	2.36	2.35	2.38	2.36	2.36	2.34	2.31	2.33	2.33	2.31
Provincial	2.12	2.14	2.15	2.19	2.19	2.17	2.15	2.12	2.10	2.12	2.12	2.12